

## RADIAL TYPE CHOKE INDUCTOR CKPP Series

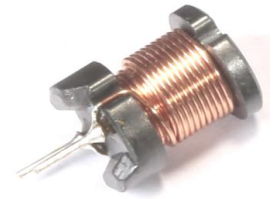
### 工字电感 CKPP 系列

#### ● FEATURES 特性

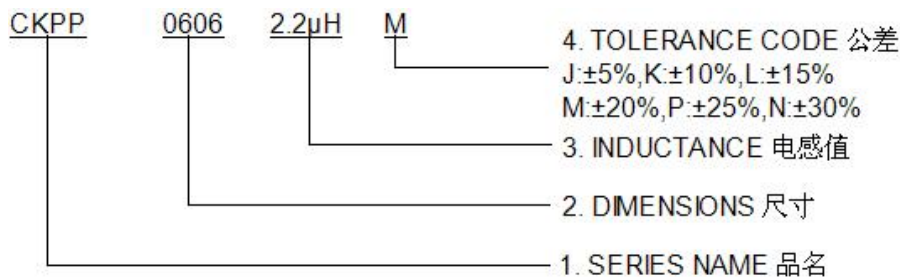
Contain high - frequency ferrite, comparatively large rated current  
高频铁氧体材料，大额定电流

#### ● APPLICATIONS 用途

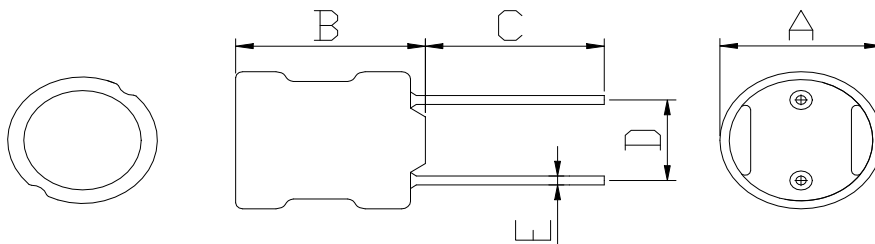
Power supplies, DC-DC converters, TVs, VTRs, Computers; computer Peripherals,  
Home Elecyric Appliance, Electronic toys and games.  
用于电源,DC-DC转换器,电视机, 录相机, 计算机,计算机周边设备,  
家用电器, 电动玩具等。



#### ● PART NUMBERING SYSTEM 品名系统



#### ● SHAPES AND DIMENSIONS 外形尺寸 (Unit:mm)



TYPE(型号)	A	B	C	D	E
CKPP0605	7.5Max	6.5Max	15±2.0	4.0±0.5	0.6±0.1
CKPP0606	7.5Max	7.5Max	15±2.0	4.0±0.5	0.6±0.1
CKPP0807	9.5Max	9.0Max	15±2.0	5.0±0.5	0.6±0.1
CKPP0809	9.5Max	12.0Max	15±2.0	5.0±0.5	0.6±0.1
CKPP1006	12.0Max	7.5Max	15±2.0	5.0±0.5	0.8±0.1
CKPP1008	12.0Max	10.0Max	15±2.0	5.0±0.5	0.8±0.1
CKPP1010	12.0Max	12.0Max	15±2.0	5.0±0.5	0.8±0.1
CKPP1014	12.0Max	16.0Max	15±2.0	5.0±0.5	0.8±0.1

#### ● Remarks 备注

- (1) All test data is reference to 25°C ambient.
- (2) IDC: DC current at which the inductance drops approximate 10% or 20% from its value without current;
- (3) Operating Temperature : -25°C ~ +85°C(Including self - temperature rise)



## ● SPECIFICATION TABLE 规格特性表

### CKPP0605

PART NUMBER 品名	INDUCTANCE ( $\mu$ H) 电感值	DCR (Max.) ( $\Omega$ ) 直流电阻	IDC (Max.) (A) 额定电流	TEST FREQUENCY 测试频率
CKPP0605-22uH/K	22 $\pm$ 10%	0.18	0.90	1kHz,0.25V
CKPP0605-27uH/K	27 $\pm$ 10%	0.21	0.81	1kHz,0.25V
CKPP0605-33uH/K	33 $\pm$ 10%	0.27	0.74	1kHz,0.25V
CKPP0605-39uH/K	39 $\pm$ 10%	0.29	0.68	1kHz,0.25V
CKPP0605-47uH/K	47 $\pm$ 10%	0.34	0.62	1kHz,0.25V
CKPP0605-56uH/K	56 $\pm$ 10%	0.42	0.57	1kHz,0.25V
CKPP0605-68uH/K	68 $\pm$ 10%	0.48	0.51	1kHz,0.25V
CKPP0605-82uH/K	82 $\pm$ 10%	0.55	0.47	1kHz,0.25V
CKPP0605-100uH/K	100 $\pm$ 10%	0.68	0.42	1kHz,0.25V
CKPP0605-120uH/K	120 $\pm$ 10%	0.77	0.39	1kHz,0.25V
CKPP0605-150uH/K	150 $\pm$ 10%	0.95	0.35	1kHz,0.25V
CKPP0605-180uH/K	180 $\pm$ 10%	1.20	0.32	1kHz,0.25V
CKPP0605-220uH/K	220 $\pm$ 10%	1.30	0.29	1kHz,0.25V
CKPP0605-270uH/K	270 $\pm$ 10%	1.55	0.26	1kHz,0.25V
CKPP0605-330uH/K	330 $\pm$ 10%	2.20	0.23	1kHz,0.25V
CKPP0605-390uH/K	390 $\pm$ 10%	2.47	0.21	1kHz,0.25V
CKPP0605-470uH/K	470 $\pm$ 10%	2.92	0.20	1kHz,0.25V
CKPP0605-560uH/K	560 $\pm$ 10%	3.97	0.18	1kHz,0.25V
CKPP0605-680uH/K	680 $\pm$ 10%	4.57	0.16	1kHz,0.25V
CKPP0605-820uH/K	820 $\pm$ 10%	5.28	0.15	1kHz,0.25V
CKPP0605-1mH/K	1000 $\pm$ 10%	7.06	0.13	1kHz,0.25V



## CKPP0606

PART NUMBER 品名	INDUCTANCE ( $\mu$ H) 电感值	DCR (Max.) ( $\Omega$ ) 直流电阻	IDC (Max.) (A) 额定电流	TEST FREQUENCY 测试频率
CKPP0606-22uH/K	22 $\pm$ 10%	0.13	0.96	1kHz,0.25V
CKPP0606-27uH/K	27 $\pm$ 10%	0.18	0.87	1kHz,0.25V
CKPP0606-33uH/K	33 $\pm$ 10%	0.21	0.78	1kHz,0.25V
CKPP0606-39uH/K	39 $\pm$ 10%	0.26	0.72	1kHz,0.25V
CKPP0606-47uH/K	47 $\pm$ 10%	0.29	0.66	1kHz,0.25V
CKPP0606-56uH/K	56 $\pm$ 10%	0.33	0.60	1kHz,0.25V
CKPP0606-68uH/K	68 $\pm$ 10%	0.36	0.55	1kHz,0.25V
CKPP0606-82uH/K	82 $\pm$ 10%	0.39	0.50	1kHz,0.25V
CKPP0606-100uH/K	100 $\pm$ 10%	0.54	0.45	1kHz,0.25V
CKPP0606-120uH/K	120 $\pm$ 10%	0.62	0.41	1kHz,0.25V
CKPP0606-150uH/K	150 $\pm$ 10%	0.72	0.37	1kHz,0.25V
CKPP0606-180uH/K	180 $\pm$ 10%	0.88	0.34	1kHz,0.25V
CKPP0606-220uH/K	220 $\pm$ 10%	0.99	0.30	1kHz,0.25V
CKPP0606-270uH/K	270 $\pm$ 10%	1.52	0.27	1kHz,0.25V
CKPP0606-330uH/K	330 $\pm$ 10%	1.69	0.25	1kHz,0.25V
CKPP0606-390uH/K	390 $\pm$ 10%	1.85	0.23	1kHz,0.25V
CKPP0606-470uH/K	470 $\pm$ 10%	2.85	0.21	1kHz,0.25V
CKPP0606-560uH/K	560 $\pm$ 10%	3.21	0.19	1kHz,0.25V
CKPP0606-680uH/K	680 $\pm$ 10%	3.60	0.17	1kHz,0.25V
CKPP0606-820uH/K	820 $\pm$ 10%	4.87	0.16	1kHz,0.25V
CKPP0606-1mH/K	1000 $\pm$ 10%	5.56	0.14	1kHz,0.25V



## CKPP0807

PART NUMBER 品名	INDUCTANCE ( $\mu$ H) 电感值	DCR (Max.) ( $\Omega$ ) 直流电阻	IDC (Max.) (A) 额定电流	TEST FREQUENCY 测试频率
CKPP0807-22uH/K	22 $\pm$ 10%	0.08	1.60	1kHz,0.25V
CKPP0807-27uH/K	27 $\pm$ 10%	0.10	1.40	1kHz,0.25V
CKPP0807-33uH/K	33 $\pm$ 10%	0.14	1.30	1kHz,0.25V
CKPP0807-39uH/K	39 $\pm$ 10%	0.15	1.20	1kHz,0.25V
CKPP0807-47uH/K	47 $\pm$ 10%	0.17	1.10	1kHz,0.25V
CKPP0807-56uH/K	56 $\pm$ 10%	0.19	0.99	1kHz,0.25V
CKPP0807-68uH/K	68 $\pm$ 10%	0.21	0.89	1kHz,0.25V
CKPP0807-82uH/K	82 $\pm$ 10%	0.27	0.81	1kHz,0.25V
CKPP0807-100uH/K	100 $\pm$ 10%	0.32	0.74	1kHz,0.25V
CKPP0807-120uH/K	120 $\pm$ 10%	0.36	0.67	1kHz,0.25V
CKPP0807-150uH/K	150 $\pm$ 10%	0.51	0.60	1kHz,0.25V
CKPP0807-180uH/K	180 $\pm$ 10%	0.57	0.55	1kHz,0.25V
CKPP0807-220uH/K	220 $\pm$ 10%	0.76	0.50	1kHz,0.25V
CKPP0807-270uH/K	270 $\pm$ 10%	0.86	0.45	1kHz,0.25V
CKPP0807-330uH/K	330 $\pm$ 10%	0.90	0.41	1kHz,0.25V
CKPP0807-390uH/K	390 $\pm$ 10%	1.28	0.37	1kHz,0.25V
CKPP0807-470uH/K	470 $\pm$ 10%	1.44	0.34	1kHz,0.25V
CKPP0807-560uH/K	560 $\pm$ 10%	1.61	0.31	1kHz,0.25V
CKPP0807-680uH/K	680 $\pm$ 10%	2.07	0.28	1kHz,0.25V
CKPP0807-820uH/K	820 $\pm$ 10%	2.33	0.26	1kHz,0.25V
CKPP0807-1mH/K	1000 $\pm$ 10%	2.72	0.23	1kHz,0.25V
CKPP0807-1.2mH/K	1200 $\pm$ 10%	3.98	0.21	1kHz,0.25V
CKPP0807-1.5mH/K	1500 $\pm$ 10%	4.50	0.19	1kHz,0.25V
CKPP0807-1.8mH/K	1800 $\pm$ 10%	6.81	0.17	1kHz,0.25V
CKPP0807-2.2mH/K	2200 $\pm$ 10%	7.56	0.16	1kHz,0.25V
CKPP0807-2.7mH/K	2700 $\pm$ 10%	8.54	0.14	1kHz,0.25V
CKPP0807-3.3mH/K	3300 $\pm$ 10%	9.74	0.13	1kHz,0.25V
CKPP0807-3.9mH/K	3900 $\pm$ 10%	12.9	0.12	1kHz,0.25V
CKPP0807-4.7mH/K	4700 $\pm$ 10%	14.7	0.11	1kHz,0.25V
CKPP0807-5.6mH/K	5600 $\pm$ 10%	20.4	0.10	1kHz,0.25V
CKPP0807-6.8mH/K	6800 $\pm$ 10%	23.0	0.09	1kHz,0.25V
CKPP0807-8.2mH/K	8200 $\pm$ 10%	30.6	0.08	1kHz,0.25V
CKPP0807-10mH/K	10000 $\pm$ 10%	35.0	0.07	1kHz,0.25V



CKPP0809

PART NUMBER 品名	INDUCTANCE ( $\mu$ H) 电感值	DCR (Max.) ( $\Omega$ ) 直流电阻	IDC (Max.) (A) 额定电流	TEST FREQUENCY 测试频率
CKPP0809-10uH/K	10 $\pm$ 10%	0.04	2.70	1kHz,0.25V
CKPP0809-12uH/K	12 $\pm$ 10%	0.045	2.60	1kHz,0.25V
CKPP0809-15uH/K	15 $\pm$ 10%	0.05	2.10	1kHz,0.25V
CKPP0809-18uH/K	18 $\pm$ 10%	0.055	2.00	1kHz,0.25V
CKPP0809-22uH/K	22 $\pm$ 10%	0.06	1.70	1kHz,0.25V
CKPP0809-27uH/K	27 $\pm$ 10%	0.06	1.60	1kHz,0.25V
CKPP0809-33uH/K	33 $\pm$ 10%	0.07	1.40	1kHz,0.25V
CKPP0809-39uH/K	39 $\pm$ 10%	0.08	1.40	1kHz,0.25V
CKPP0809-47uH/K	47 $\pm$ 10%	0.10	1.30	1kHz,0.25V
CKPP0809-56uH/K	56 $\pm$ 10%	0.11	1.20	1kHz,0.25V
CKPP0809-68uH/K	68 $\pm$ 10%	0.14	1.10	1kHz,0.25V
CKPP0809-82uH/K	82 $\pm$ 10%	0.16	1.00	1kHz,0.25V
CKPP0809-100uH/K	100 $\pm$ 10%	0.19	0.90	1kHz,0.25V
CKPP0809-120uH/K	120 $\pm$ 10%	0.22	0.82	1kHz,0.25V
CKPP0809-150uH/K	150 $\pm$ 10%	0.27	0.74	1kHz,0.25V
CKPP0809-180uH/K	180 $\pm$ 10%	0.31	0.71	1kHz,0.25V
CKPP0809-220uH/K	220 $\pm$ 10%	0.38	0.64	1kHz,0.25V
CKPP0809-270uH/K	270 $\pm$ 10%	0.53	0.57	1kHz,0.25V
CKPP0809-330uH/K	330 $\pm$ 10%	0.61	0.51	1kHz,0.25V
CKPP0809-390uH/K	390 $\pm$ 10%	0.69	0.48	1kHz,0.25V
CKPP0809-470uH/K	470 $\pm$ 10%	0.89	0.43	1kHz,0.25V
CKPP0809-560uH/K	560 $\pm$ 10%	1.01	0.40	1kHz,0.25V
CKPP0809-680uH/K	680 $\pm$ 10%	1.18	0.35	1kHz,0.25V
CKPP0809-820uH/K	820 $\pm$ 10%	1.57	0.32	1kHz,0.25V
CKPP0809-1mH/K	1000 $\pm$ 10%	1.84	0.30	1kHz,0.25V
CKPP0809-1.2mH/K	1200 $\pm$ 10%	2.10	0.27	1kHz,0.25V
CKPP0809-1.5mH/K	1500 $\pm$ 10%	2.80	0.23	1kHz,0.25V
CKPP0809-1.8mH/K	1800 $\pm$ 10%	3.21	0.21	1kHz,0.25V
CKPP0809-2.2mH/K	2200 $\pm$ 10%	4.21	0.19	1kHz,0.25V
CKPP0809-2.7mH/K	2700 $\pm$ 10%	4.94	0.17	1kHz,0.25V
CKPP0809-3.3mH/K	3300 $\pm$ 10%	6.16	0.15	1kHz,0.25V
CKPP0809-3.9mH/K	3900 $\pm$ 10%	6.84	0.14	1kHz,0.25V
CKPP0809-4.7mH/K	4700 $\pm$ 10%	7.89	0.13	1kHz,0.25V
CKPP0809-5.6mH/K	5600 $\pm$ 10%	11.5	0.12	1kHz,0.25V
CKPP0809-6.8mH/K	6800 $\pm$ 10%	13.2	0.11	1kHz,0.25V
CKPP0809-8.2mH/K	8200 $\pm$ 10%	15.2	0.10	1kHz,0.25V
CKPP0809-10mH/K	10000 $\pm$ 10%	22.0	0.09	1kHz,0.25V



# 岑科科技(深圳)集团有限公司

SHENZHEN CENKER TECHNOLOGY GROUP CO., LTD.

## CKPP1006

PART NUMBER 品名	INDUCTANCE ( $\mu$ H) 电感值	DCR (Max.) ( $\Omega$ ) 直流电阻	IDC (Max.) (A) 额定电流	TEST FREQUENCY 测试频率
CKPP1006-10uH/K	10 $\pm$ 10%	0.04	2.60	1kHz,0.25V
CKPP1006-12uH/K	12 $\pm$ 10%	0.044	2.30	1kHz,0.25V
CKPP1006-15uH/K	15 $\pm$ 10%	0.058	2.00	1kHz,0.25V
CKPP1006-18uH/K	18 $\pm$ 10%	0.064	1.90	1kHz,0.25V
CKPP1006-22uH/K	22 $\pm$ 10%	0.088	1.80	1kHz,0.25V
CKPP1006-27uH/K	27 $\pm$ 10%	0.10	1.50	1kHz,0.25V
CKPP1006-33uH/K	33 $\pm$ 10%	0.11	1.40	1kHz,0.25V
CKPP1006-39uH/K	39 $\pm$ 10%	0.14	1.20	1kHz,0.25V
CKPP1006-47uH/K	47 $\pm$ 10%	0.16	1.10	1kHz,0.25V
CKPP1006-56uH/K	56 $\pm$ 10%	0.19	1.00	1kHz,0.25V
CKPP1006-68uH/K	68 $\pm$ 10%	0.22	0.90	1kHz,0.25V
CKPP1006-82uH/K	82 $\pm$ 10%	0.29	0.80	1kHz,0.25V
CKPP1006-100uH/K	100 $\pm$ 10%	0.32	0.80	1kHz,0.25V
CKPP1006-120uH/K	120 $\pm$ 10%	0.38	0.70	1kHz,0.25V
CKPP1006-150uH/K	150 $\pm$ 10%	0.50	0.65	1kHz,0.25V
CKPP1006-180uH/K	180 $\pm$ 10%	0.56	0.60	1kHz,0.25V
CKPP1006-220uH/K	220 $\pm$ 10%	0.78	0.55	1kHz,0.25V
CKPP1006-270uH/K	270 $\pm$ 10%	0.92	0.50	1kHz,0.25V
CKPP1006-330uH/K	330 $\pm$ 10%	1.1	0.45	1kHz,0.25V
CKPP1006-390uH/K	390 $\pm$ 10%	1.3	0.40	1kHz,0.25V
CKPP1006-470uH/K	470 $\pm$ 10%	1.5	0.38	1kHz,0.25V
CKPP1006-560uH/K	560 $\pm$ 10%	1.9	0.35	1kHz,0.25V
CKPP1006-680uH/K	680 $\pm$ 10%	2.2	0.32	1kHz,0.25V
CKPP1006-820uH/K	820 $\pm$ 10%	2.6	0.30	1kHz,0.25V
CKPP1006-1mH/K	1000 $\pm$ 10%	3.2	0.25	1kHz,0.25V

**CKPP1008**

PART NUKBER 品名	INDUCTANCE ( $\mu$ H) 电感值	DCR (Max.) ( $\Omega$ ) 直流电阻	IDC (Max.) (A) 额定电流	TEST FREQUENCY 测试频率
CKPP1008-10uH/K	10 $\pm$ 10%	0.05	2.80	1kHz,0.25V
CKPP1008-12uH/K	12 $\pm$ 10%	0.06	2.50	1kHz,0.25V
CKPP1008-15uH/K	15 $\pm$ 10%	0.07	2.30	1kHz,0.25V
CKPP1008-18uH/K	18 $\pm$ 10%	0.08	2.10	1kHz,0.25V
CKPP1008-22uH/K	22 $\pm$ 10%	0.09	2.00	1kHz,0.25V
CKPP1008-27uH/K	27 $\pm$ 10%	0.10	1.76	1kHz,0.25V
CKPP1008-33uH/K	33 $\pm$ 10%	0.11	1.60	1kHz,0.25V
CKPP1008-39uH/K	39 $\pm$ 10%	0.12	1.38	1kHz,0.25V
CKPP1008-47uH/K	47 $\pm$ 10%	0.14	1.28	1kHz,0.25V
CKPP1008-56uH/K	56 $\pm$ 10%	0.15	1.20	1kHz,0.25V
CKPP1008-68uH/K	68 $\pm$ 10%	0.16	1.00	1kHz,0.25V
CKPP1008-82uH/K	82 $\pm$ 10%	0.18	0.96	1kHz,0.25V
CKPP1008-100uH/K	100 $\pm$ 10%	0.20	0.92	1kHz,0.25V
CKPP1008-120uH/K	120 $\pm$ 10%	0.24	0.80	1kHz,0.25V
CKPP1008-150uH/K	150 $\pm$ 10%	0.35	0.73	1kHz,0.25V
CKPP1008-180uH/K	180 $\pm$ 10%	0.40	0.64	1kHz,0.25V
CKPP1008-220uH/K	220 $\pm$ 10%	0.54	0.61	1kHz,0.25V
CKPP1008-270uH/K	270 $\pm$ 10%	0.75	0.56	1kHz,0.25V
CKPP1008-330uH/K	330 $\pm$ 10%	0.86	0.50	1kHz,0.25V
CKPP1008-390uH/K	390 $\pm$ 10%	0.93	0.44	1kHz,0.25V
CKPP1008-470uH/K	470 $\pm$ 10%	1.23	0.41	1kHz,0.25V
CKPP1008-560uH/K	560 $\pm$ 10%	1.34	0.39	1kHz,0.25V
CKPP1008-680uH/K	680 $\pm$ 10%	1.53	0.34	1kHz,0.25V
CKPP1008-820uH/K	820 $\pm$ 10%	2.10	0.32	1kHz,0.25V
CKPP1008-1mH/K	1000 $\pm$ 10%	2.30	0.28	1kHz,0.25V



# 岑科科技(深圳)集团有限公司

SHENZHEN CENKER TECHNOLOGY GROUP CO.,LTD.

## CKPP1010

PART NUMBER 品名	INDUCTANCE ( $\mu$ H) 电感值	DCR (Max.) ( $\Omega$ ) 直流电阻	IDC (Max.) (A) 额定电流	TEST FREQUENCY 测试频率
CKPP1010-10uH/K	10 $\pm$ 10%	0.023	3.50	1kHz,0.25V
CKPP1010-12uH/K	12 $\pm$ 10%	0.024	3.24	1kHz,0.25V
CKPP1010-15uH/K	15 $\pm$ 10%	0.036	2.88	1kHz,0.25V
CKPP1010-18uH/K	18 $\pm$ 10%	0.039	2.61	1kHz,0.25V
CKPP1010-22uH/K	22 $\pm$ 10%	0.042	2.34	1kHz,0.25V
CKPP1010-27uH/K	27 $\pm$ 10%	0.045	2.16	1kHz,0.25V
CKPP1010-33uH/K	33 $\pm$ 10%	0.057	1.89	1kHz,0.25V
CKPP1010-39uH/K	39 $\pm$ 10%	0.076	1.80	1kHz,0.25V
CKPP1010-47uH/K	47 $\pm$ 10%	0.10	1.62	1kHz,0.25V
CKPP1010-56uH/K	56 $\pm$ 10%	0.11	1.44	1kHz,0.25V
CKPP1010-68uH/K	68 $\pm$ 10%	0.15	1.35	1kHz,0.25V
CKPP1010-82uH/K	82 $\pm$ 10%	0.16	1.26	1kHz,0.25V
CKPP1010-100uH/K	100 $\pm$ 10%	0.19	1.08	1kHz,0.25V
CKPP1010-120uH/K	120 $\pm$ 10%	0.21	0.99	1kHz,0.25V
CKPP1010-150uH/K	150 $\pm$ 10%	0.23	0.90	1kHz,0.25V
CKPP1010-180uH/K	180 $\pm$ 10%	0.26	0.82	1kHz,0.25V
CKPP1010-220uH/K	220 $\pm$ 10%	0.29	0.74	1kHz,0.25V
CKPP1010-270uH/K	270 $\pm$ 10%	0.36	0.67	1kHz,0.25V
CKPP1010-330uH/K	330 $\pm$ 10%	0.51	0.61	1kHz,0.25V
CKPP1010-390uH/K	390 $\pm$ 10%	0.69	0.55	1kHz,0.25V
CKPP1010-470uH/K	470 $\pm$ 10%	0.98	0.51	1kHz,0.25V
CKPP1010-560uH/K	560 $\pm$ 10%	1.10	0.46	1kHz,0.25V
CKPP1010-680uH/K	680 $\pm$ 10%	1.20	0.42	1kHz,0.25V
CKPP1010-820uH/K	820 $\pm$ 10%	1.30	0.38	1kHz,0.25V
CKPP1010-1mH/K	1000 $\pm$ 10%	1.50	0.35	1kHz,0.25V





CKPP1014

PART NUMBER 品名	INDUCTANCE ( $\mu$ H) 电感值	DCR (Max.) ( $\Omega$ ) 直流电阻	IDC (Max.) (A) 额定电流	TEST FREQUENCY 测试频率
CKPP1014-6.8uH/M	6.8 $\pm$ 20%	0.026	4.3	1kHz,0.25V
CKPP1014-8.2uH/M	8.2 $\pm$ 20%	0.03	4.1	1kHz,0.25V
CKPP1014-10uH/K	10 $\pm$ 10%	0.033	4.0	1kHz,0.25V
CKPP1014-12uH/K	12 $\pm$ 10%	0.035	3.9	1kHz,0.25V
CKPP1014-15uH/K	15 $\pm$ 10%	0.039	3.7	1kHz,0.25V
CKPP1014-18uH/K	18 $\pm$ 10%	0.049	3.5	1kHz,0.25V
CKPP1014-22uH/K	22 $\pm$ 10%	0.051	3.3	1kHz,0.25V
CKPP1014-27uH/K	27 $\pm$ 10%	0.057	3.1	1kHz,0.25V
CKPP1014-33uH/K	33 $\pm$ 10%	0.064	2.9	1kHz,0.25V
CKPP1014-39uH/K	39 $\pm$ 10%	0.074	2.7	1kHz,0.25V
CKPP1014-47uH/K	47 $\pm$ 10%	0.083	2.5	1kHz,0.25V
CKPP1014-56uH/K	56 $\pm$ 10%	0.104	2.3	1kHz,0.25V
CKPP1014-68uH/K	68 $\pm$ 10%	0.117	2.1	1kHz,0.25V
CKPP1014-82uH/K	82 $\pm$ 10%	0.13	1.9	1kHz,0.25V
CKPP1014-100uH/K	100 $\pm$ 10%	0.143	1.7	1kHz,0.25V
CKPP1014-120uH/K	120 $\pm$ 10%	0.195	1.5	1kHz,0.25V
CKPP1014-150uH/K	150 $\pm$ 10%	0.221	1.4	1kHz,0.25V
CKPP1014-180uH/K	180 $\pm$ 10%	0.26	1.3	1kHz,0.25V
CKPP1014-220uH/K	220 $\pm$ 10%	0.35	1.2	1kHz,0.25V
CKPP1014-270uH/K	270 $\pm$ 10%	0.39	1.1	1kHz,0.25V
CKPP1014-330uH/K	330 $\pm$ 10%	0.52	1.0	1kHz,0.25V
CKPP1014-390uH/K	390 $\pm$ 10%	0.57	0.92	1kHz,0.25V
CKPP1014-470uH/K	470 $\pm$ 10%	0.65	0.84	1kHz,0.25V
CKPP1014-560uH/K	560 $\pm$ 10%	0.79	0.75	1kHz,0.25V
CKPP1014-680uH/K	680 $\pm$ 10%	0.96	0.69	1kHz,0.25V
CKPP1014-820uH/K	820 $\pm$ 10%	1.22	0.62	1kHz,0.25V
CKPP1014-1mH/K	1000 $\pm$ 10%	1.60	0.52	1kHz,0.25V
CKPP1014-1.2mH/K	1200 $\pm$ 10%	2.20	0.46	1kHz,0.25V
CKPP1014-1.5mH/K	1500 $\pm$ 10%	2.50	0.41	1kHz,0.25V
CKPP1014-1.8mH/K	1800 $\pm$ 10%	2.90	0.36	1kHz,0.25V
CKPP1014-2.2mH/K	2200 $\pm$ 10%	3.20	0.32	1kHz,0.25V
CKPP1014-2.7mH/K	2700 $\pm$ 10%	3.70	0.29	1kHz,0.25V
CKPP1014-3.3mH/K	3300 $\pm$ 10%	5.00	0.27	1kHz,0.25V
CKPP1014-3.9mH/K	3900 $\pm$ 10%	5.60	0.25	1kHz,0.25V
CKPP1014-4.7mH/K	4700 $\pm$ 10%	7.40	0.23	1kHz,0.25V
CKPP1014-5.6mH/K	5600 $\pm$ 10%	8.20	0.21	1kHz,0.25V
CKPP1014-6.8mH/K	6800 $\pm$ 10%	11.9	0.19	1kHz,0.25V
CKPP1014-8.2mH/K	8200 $\pm$ 10%	14.0	0.17	1kHz,0.25V
CKPP1014-10mH/K	10000 $\pm$ 10%	16.0	0.16	1kHz,0.25V